

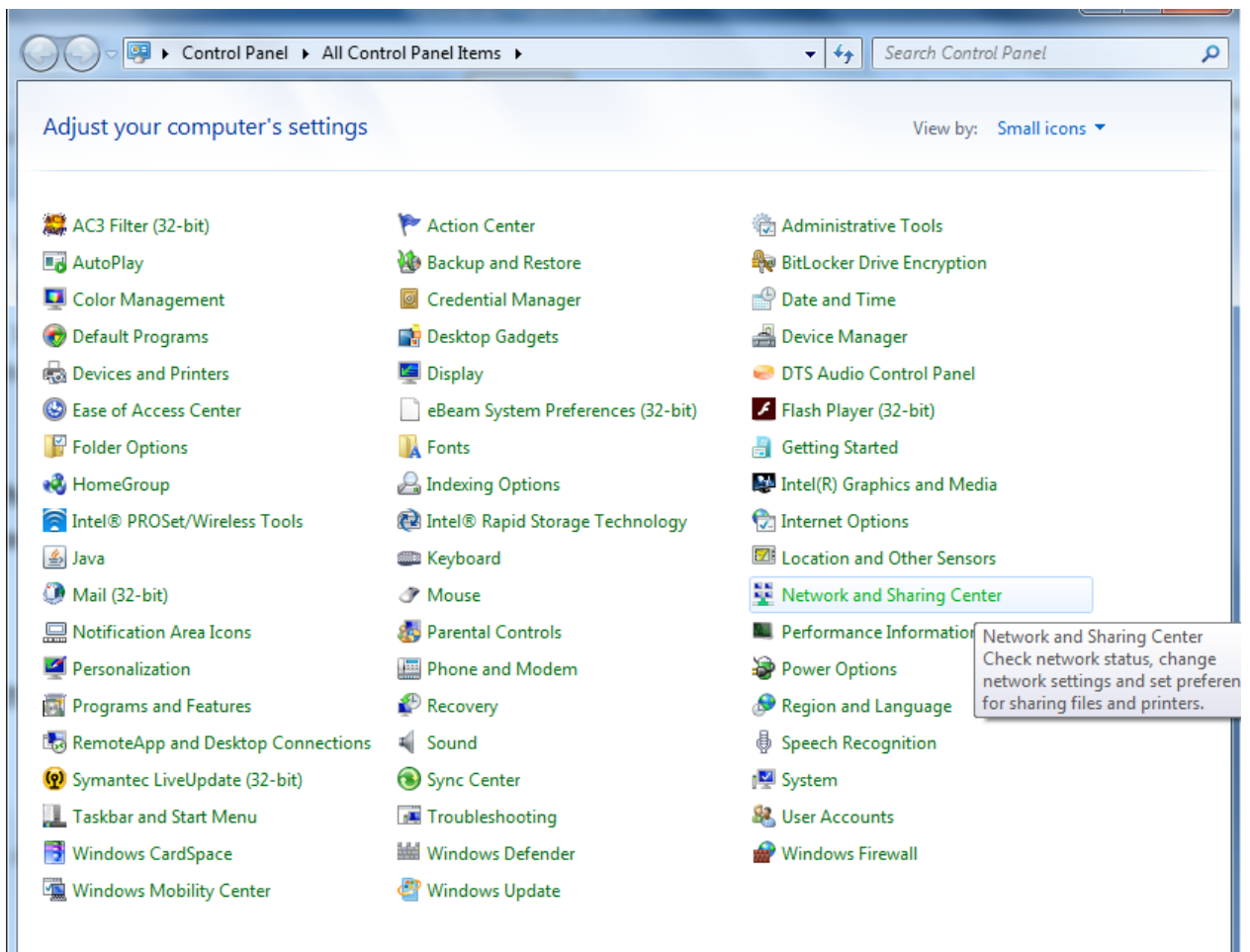
SLIIT BYOD

1. To use SLIIT WIFI, search for 'SLIIT' SSID.
2. Use your student domain credentials to get onboard.
3. Windows 7 users strictly follow the below steps. Rest of the operating systems (including Mac) are capable to connect in a few steps without the following.

This service is currently available in FOC 1st, 2nd, 3rd floors, FOB Basement common area and FOE 2nd Floor

STEPS TO CREATE DOT.1X CONFIGURATION FOR SLIIT SSID ON WINDOWS 7

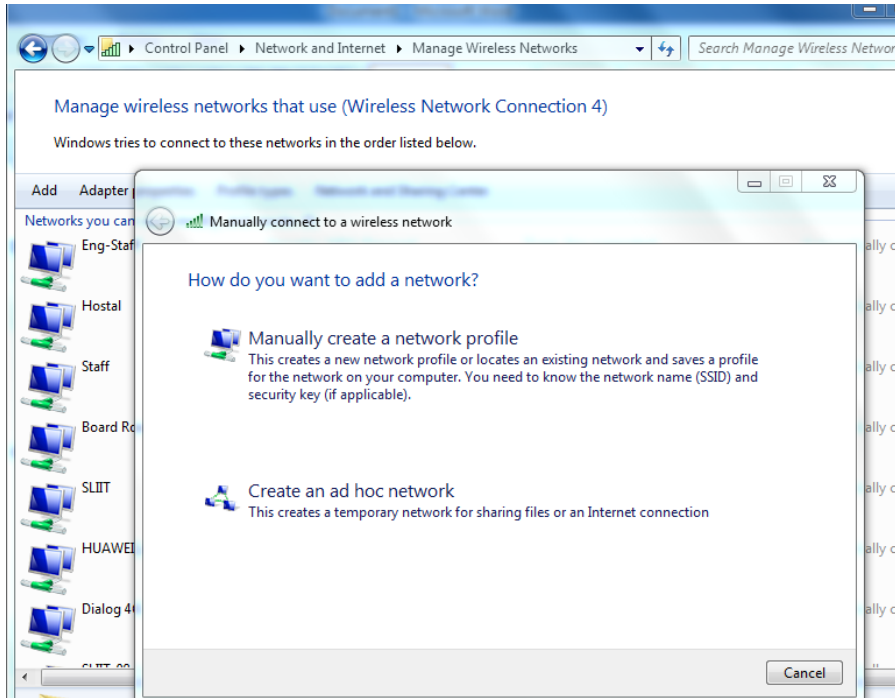
1. Go to **Control Panel** and click **Network and Sharing Center**



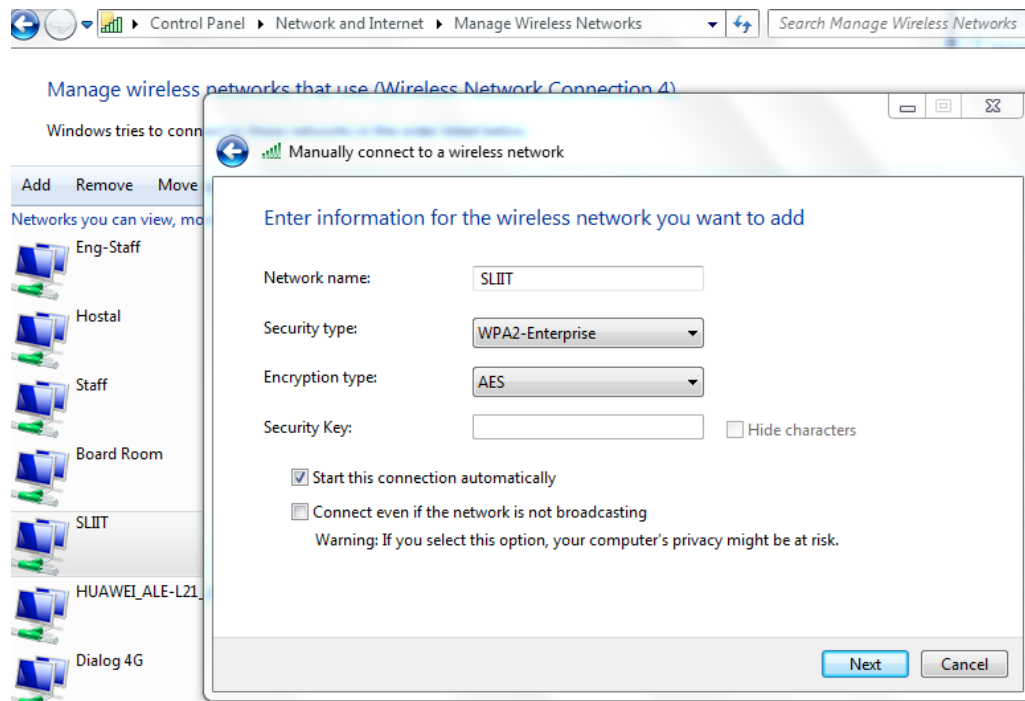
2. In **Network and Sharing Center** select **Manage wireless networks**.



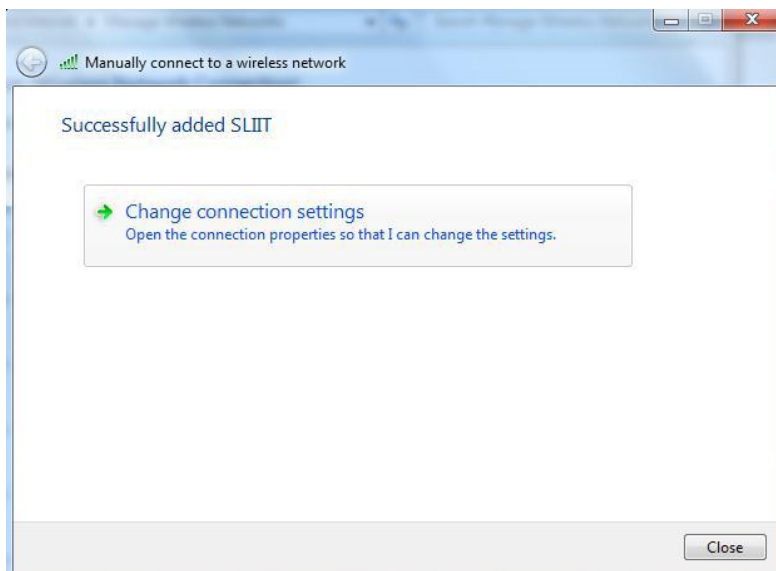
3. Click **Add** and select **Manually create a network profile**.



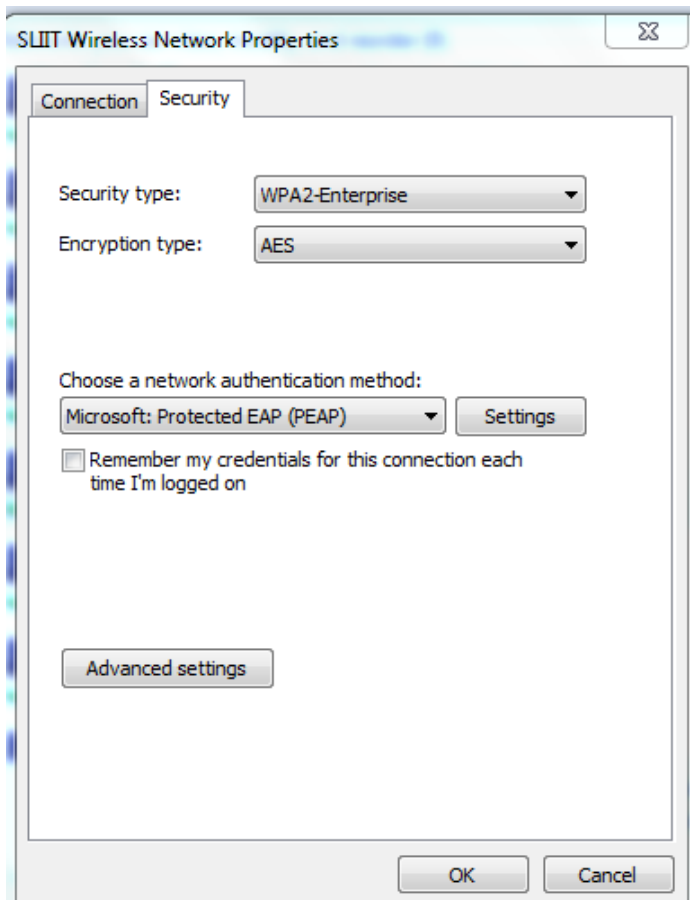
4. Fill information as shown below and click Next.



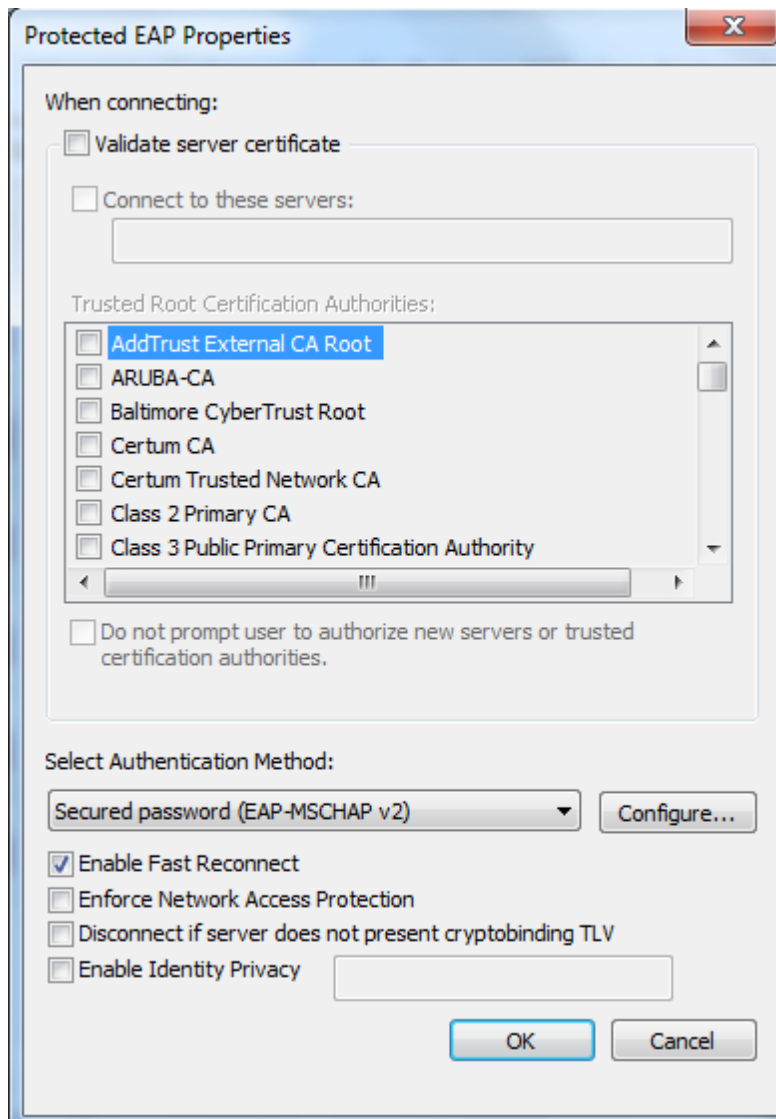
5. Click **Change connection settings**.



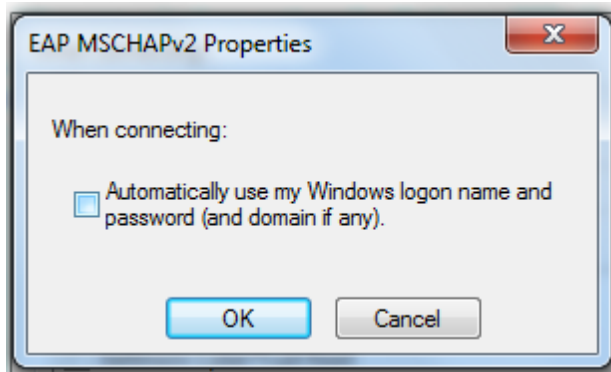
6. Click **Security** tab and click **Settings** button as shown below



7. In **Protected EAP Properties** uncheck the **Validate server certificate** and click **Configure** button in **Select Authentication Method**.

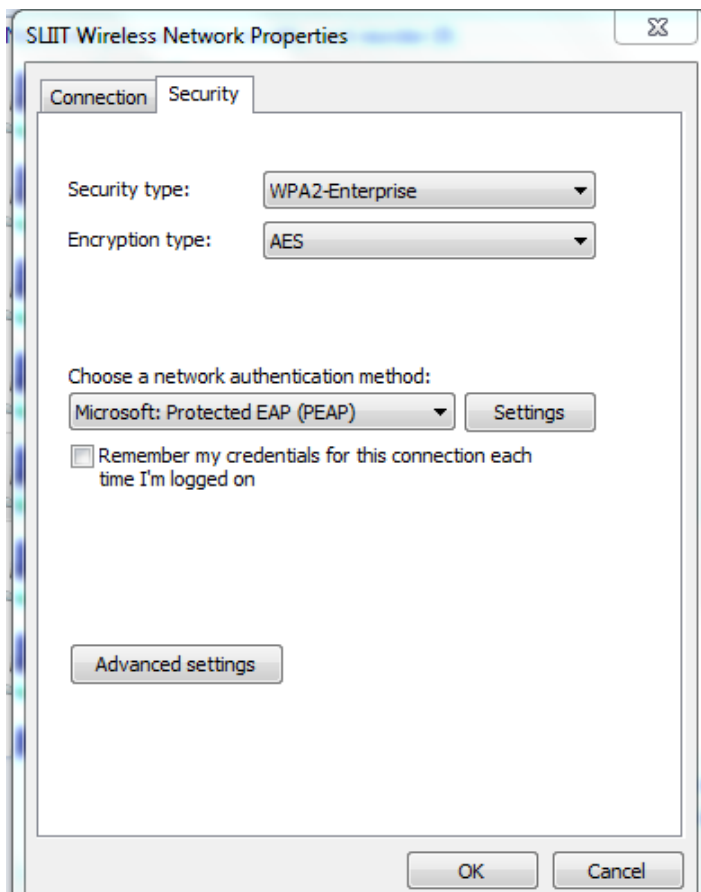


8. In **MSCHAPv2 Properties** untick the check box as shown below and click **OK**

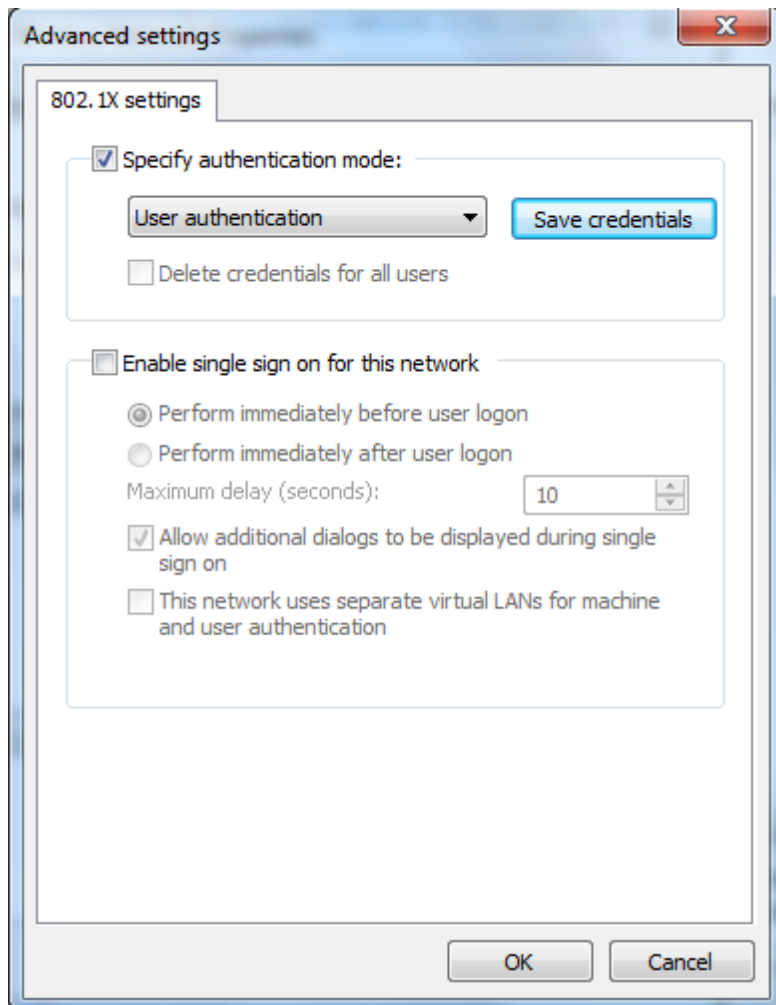


9. Click **OK** in **Protected EAP Properties**

10. In **SLIIT Wireless Network Properties** click **Advance settings** button.



11. in **Advance settings** tick the **Specific authentication mode** check box and from drop down menu select **User authentication** and click **OK**



12. Finally click OK in SLIIT Wireless Network Properties.

Now please try to connect to the SLIIT SSID using your Domain credentials (lab username and password)

If face any difficulties or getting error message please contact SLIIT IT department.